

THE MANDIBLE

AN ATLAS OF OSTEOLOGICAL AND
RADIOLOGICAL ANATOMY



Joe Iwanaga and R. Shane Tubbs

ABOUT THE AUTHORS



Joe Iwanaga, DDS, PhD, is an oral and maxillofacial surgeon and clinical anatomist. He is an Associate Professor of Neurosurgery and Neurology at Tulane University School of Medicine, New Orleans, Louisiana. He is also an Associate Professor of Anatomy and Dental and Oral Medical Center at Kurume University School of Medicine, Kurume, Fukuoka, Japan. He is the author of more than 400 articles in peer-reviewed journals. Dr. Iwanaga is a President of the Clinical Anatomy Research Association in Oral and Maxillofacial Surgery, Councilor-at-Large of the American Association of Clinical Anatomists, and Coordinator of the FIPAT Oral Anatomy Working Group of the International Federation of Associations of Anatomists. He is a Dental, Oral and Maxillofacial Section editor of the journal *Clinical Anatomy*.



R. Shane Tubbs, MS, PA-C, PhD is a clinical anatomist, author, editor, and researcher. He is Professor of Neurosurgery, Neurology, Surgery, and Structural & Cellular Biology at Tulane University School of Medicine, New Orleans, Louisiana. Dr. Tubbs is President-Elect of the American Association of Clinical Anatomists and serves as the Editor-in-Chief of the journal *Clinical Anatomy*. His h-index is 74 and in 2018, he was listed as a “hyperprolific author” in the journal *Nature*. He has also authored/edited over 50 books and is a section editor for the 41st and 42nd editions of *Gray’s Anatomy*.

THE MANIDIBLE

An Atlas of Osteological and Radiological Anatomy

By

JOE IWANAGA, DDS, PhD

*Department of Neurosurgery, Tulane Center for Clinical Neuroscience, Tulane
University School of Medicine, New Orleans, LA, USA*
*Department of Neurology, Tulane Center for Clinical Neuroscience, Tulane University
School of Medicine, New Orleans, LA, USA*
*Division of Gross and Clinical Anatomy, Department of Anatomy, Kurume University
School of Medicine, Kurume, Fukuoka, Japan*
*Dental and Oral Medical Center, Kurume University School of Medicine, Kurume,
Fukuoka, Japan*

and

R. SHANE TUBBS, PhD

Professor, Department of Neurosurgery
Professor, Department of Structural and Cellular Biology
Director of Surgical Anatomy, Tulane School of Medicine
Program Director of Anatomical Research, Clinical Neuroscience Research Center
Tulane University School of Medicine, New Orleans, LA



CHARLES C THOMAS • PUBLISHER, LTD.
Springfield • Illinois • U.S.A.

Published and Distributed Throughout the World by

CHARLES C THOMAS • PUBLISHER, LTD.
2600 South First Street
Springfield, Illinois 62704

This book is protected by copyright. No part of
it may be reproduced in any manner without written
permission from the publisher. All rights reserved.

© 2022 by CHARLES C THOMAS • PUBLISHER, LTD.

ISBN 978-0-398-09378-5 (hard)
ISBN 978-0-398-09379-2 (ebook)

Library of Congress Catalog Card Number: 2021033598 (print)
2021033599 (ebook)

*With THOMAS BOOKS careful attention is given to all details of manufacturing
and design. It is the Publisher's desire to present books that are satisfactory as to their
physical qualities and artistic possibilities and appropriate for their particular use.
THOMAS BOOKS will be true to those laws of quality that assure a good name
and good will.*

*Printed in the United States of America
MM-S-2*

Library of Congress Cataloging-in-Publication Data

Names: Iwanaga, Joe, author. | Tubbs, R. Shane, author.
Title: The mandible : an atlas of osteological and radiological anatomy
/ by Joe Iwanaga and R. Shane Tubbs.
Description: Springfield, Illinois : Charles C Thomas, Publisher, Ltd.,
[2022]
Identifiers: LCCN 2021033598 (print) | LCCN 2021033599 (ebook) |
ISBN 9780398093785 (hardback) | ISBN 9780398093792 (ebook)
Subjects: MESH: Mandible—anatomy & histology | Mandible—diagnos-
tic imaging | Anatomic Variation | Atlas
Classification: LCC QM695.F32 (print) | LCC QM695.F32 (ebook) |
NLM WU 17 | DDC 611/.716—dc23
LC record available at <https://lcn.loc.gov/2021033598>
LC ebook record available at <https://lcn.loc.gov/2021033599>

CONTENTS

	<i>Page</i>
<i>Preface</i>	v
<i>Chapter 1: Overview of the Mandible (90)</i>	3
1.1. Anterior view (20)	5
1.2. Posterior view (15)	15
1.3. Lateral view (32)	23
1.4. Superior view (23)	39
<i>Chapter 2: Anterior Mandible (136)</i>	51
2.1. Oblique view (29)	53
2.2. Anterior view (20)	68
2.3. Superior view (13)	78
2.4. Posterior view (74)	85
<i>Chapter 3: Mandibular Body (180)</i>	123
3.1. Mental foramen (46)	125
3.2. Buccal shelf (19)	148
3.3. Submandibular/sublingual fossae (52)	158
3.4. Retromolar area (20)	184
3.5. Wisdom tooth (17)	194
3.6. Coronal section (26)	203
<i>Chapter 4: Ramus of Mandible (270)</i>	217
4.1. Mandibular foramen (90)	219
4.2. Condylar process (100)	264
4.3. Coronoid process (60)	314
4.4. Angle (20)	344
<i>Chapter 5: Fetus (66)</i>	355
5.1. 27-week (11)	357
5.2. 29-week (11)	363
5.3. 28-week (11)	369
5.4. 28-week (11)	375

5.5. 29-week (11)	381
5.6. 31-week (11)	387
<i>Chapter 6: Cone-Beam Computed Tomography (CBCT) (50)</i>	393
6.1. Mandible in CBCT (3)	395
6.2. Anterior mandible in CBCT (7)	397
6.3. Mental foramen in CBCT (18)	401
6.4. Various trabecular patterns in CBCT (22)	410
<i>Chapter 7: Teeth (left) (41)</i>	421
7.1. Central incisor (5)	423
7.2. Lateral incisor (5)	426
7.3. Canine (5)	429
7.4. First premolar (5)	432
7.5. Second premolar (5)	435
7.6. First molar (5)	438
7.7. Second molar (5)	441
7.8. Third molar (5)	444
7.9. Alveolar process (1)	447

1.2: POSTERIOR VIEW

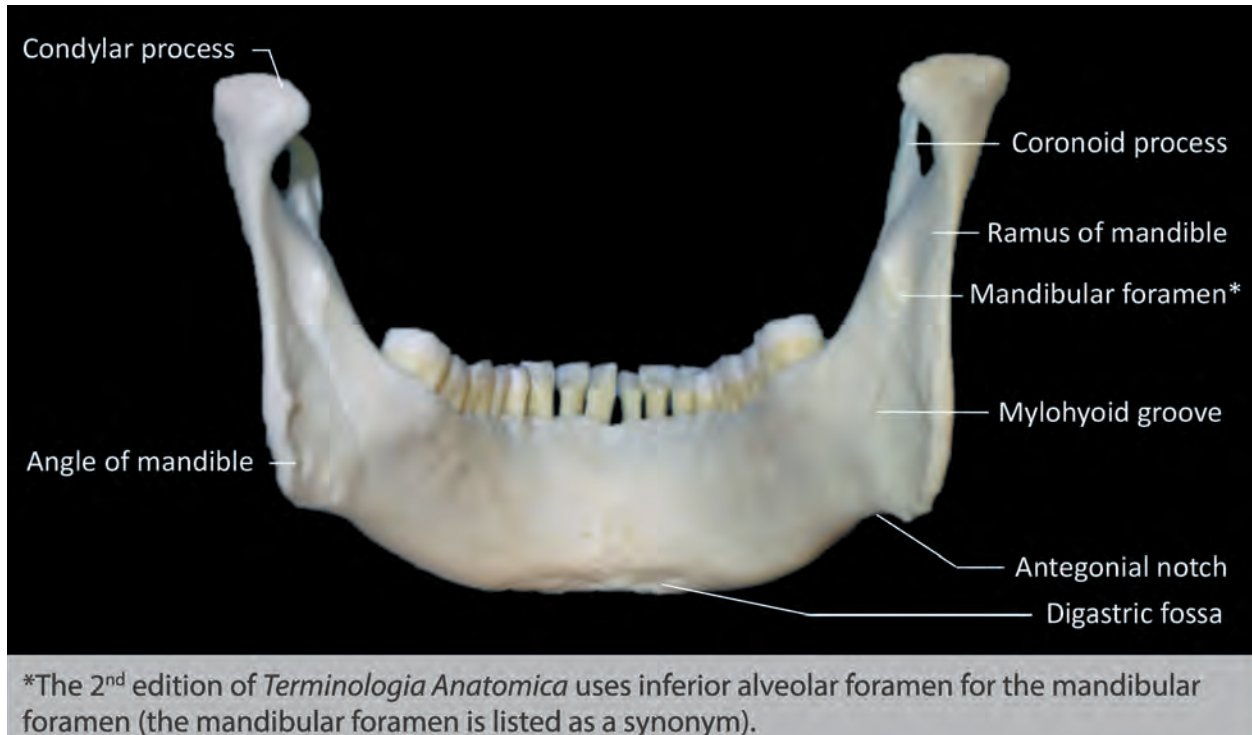


Plate 1.2.1.

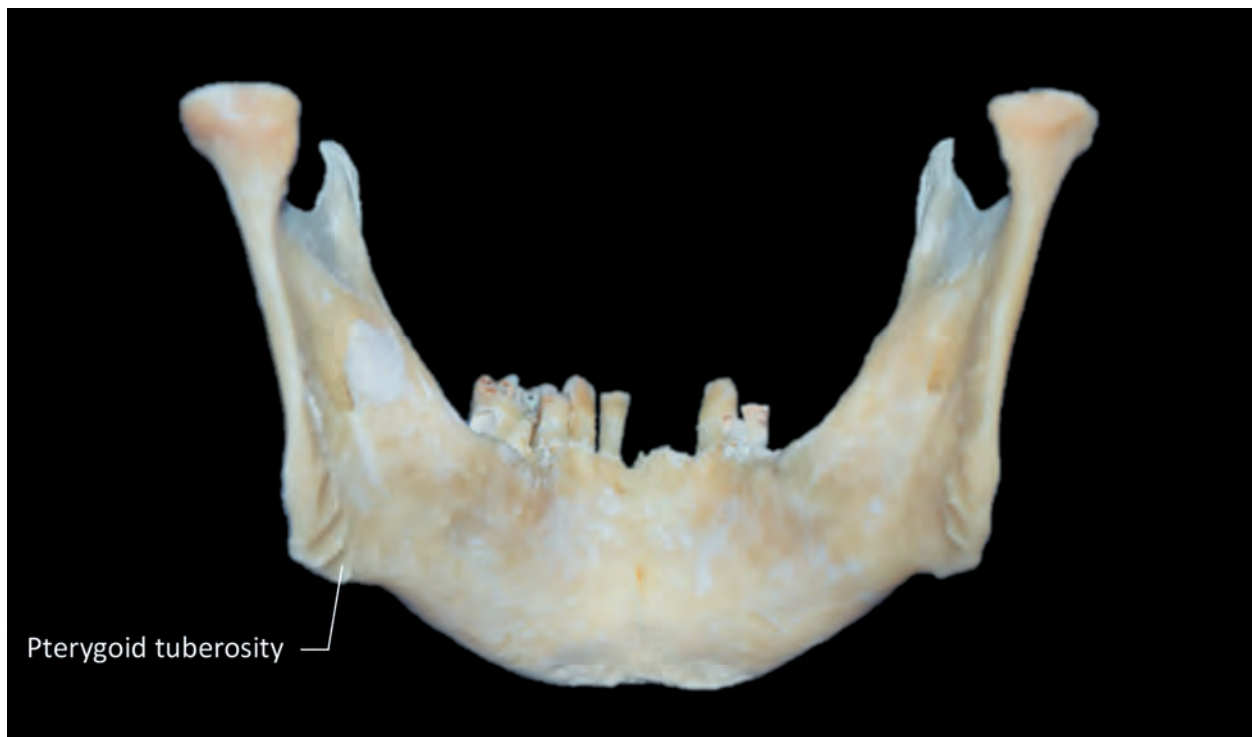


Plate 1.2.2.



Plate 1.2.3.

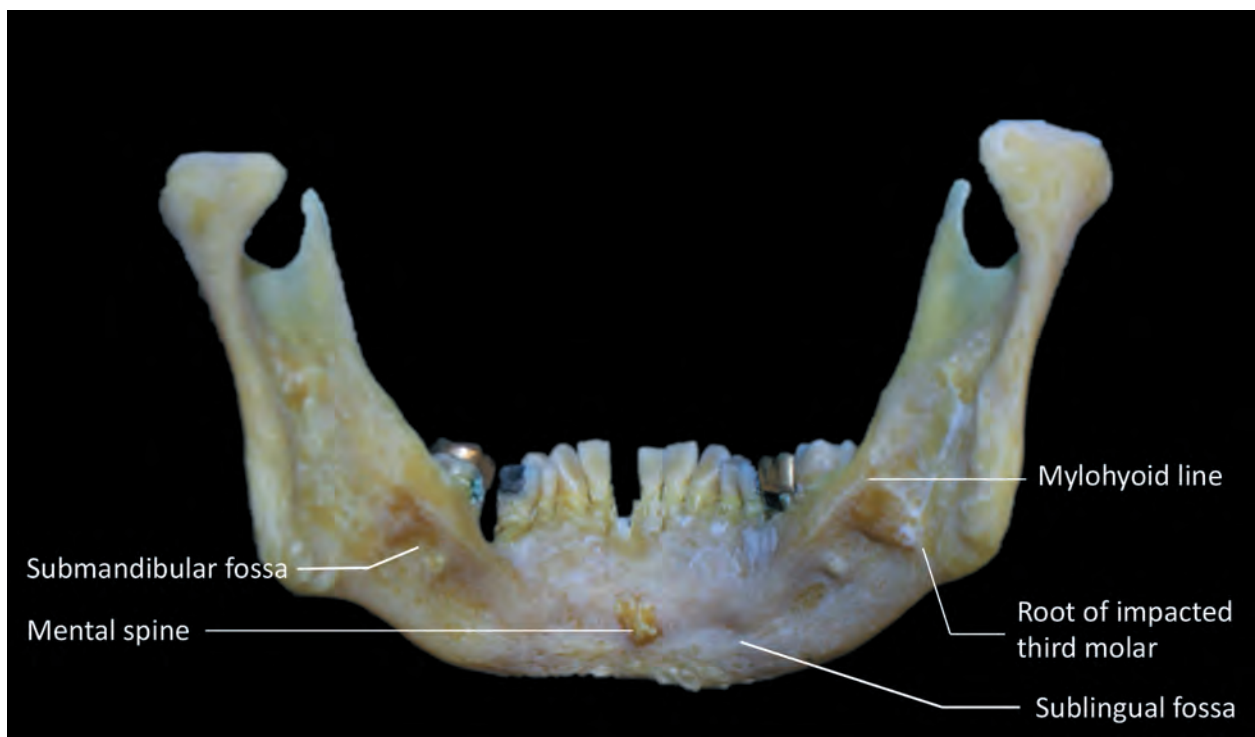


Plate 1.2.4.



Plate 1.3.17.



Plate 1.3.18.



Plate 1.3.27.



Plate 1.3.28.



Plate 1.4.21.



Plate 1.4.22.

2.4: POSTERIOR VIEW

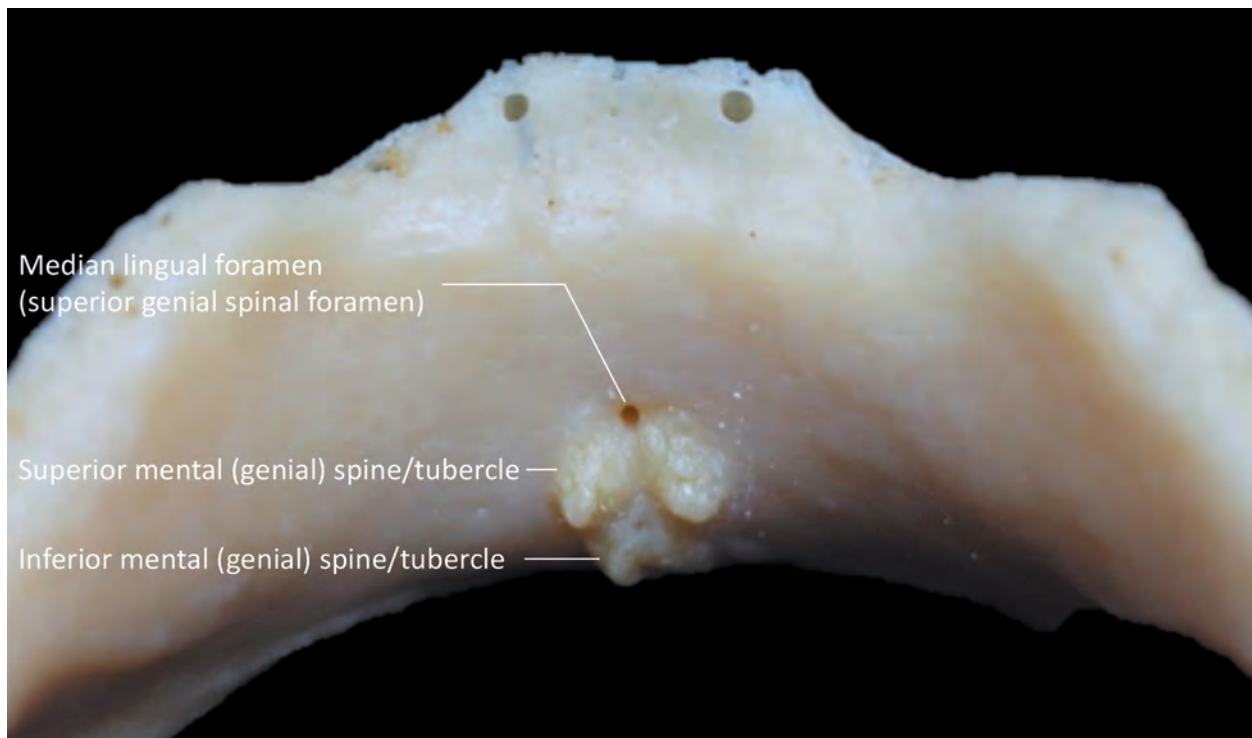


Plate 2.4.1.

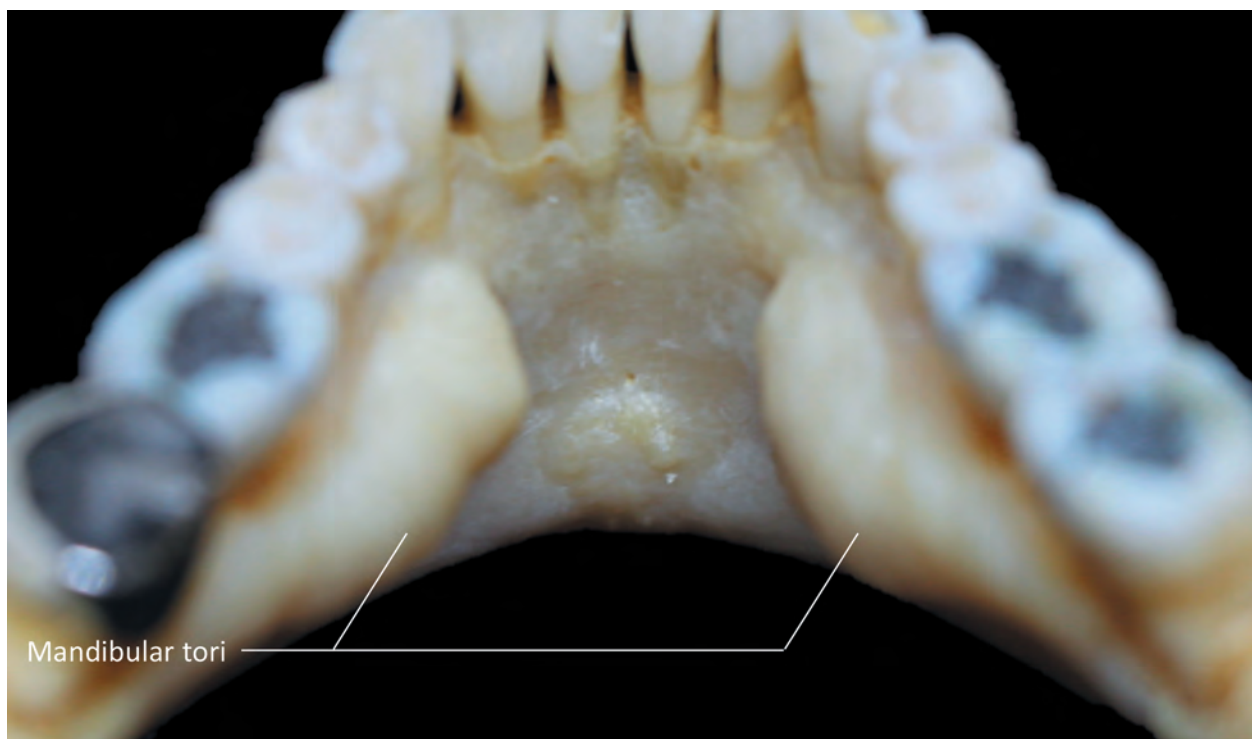


Plate 2.4.2.

3.5: WISDOM TOOTH

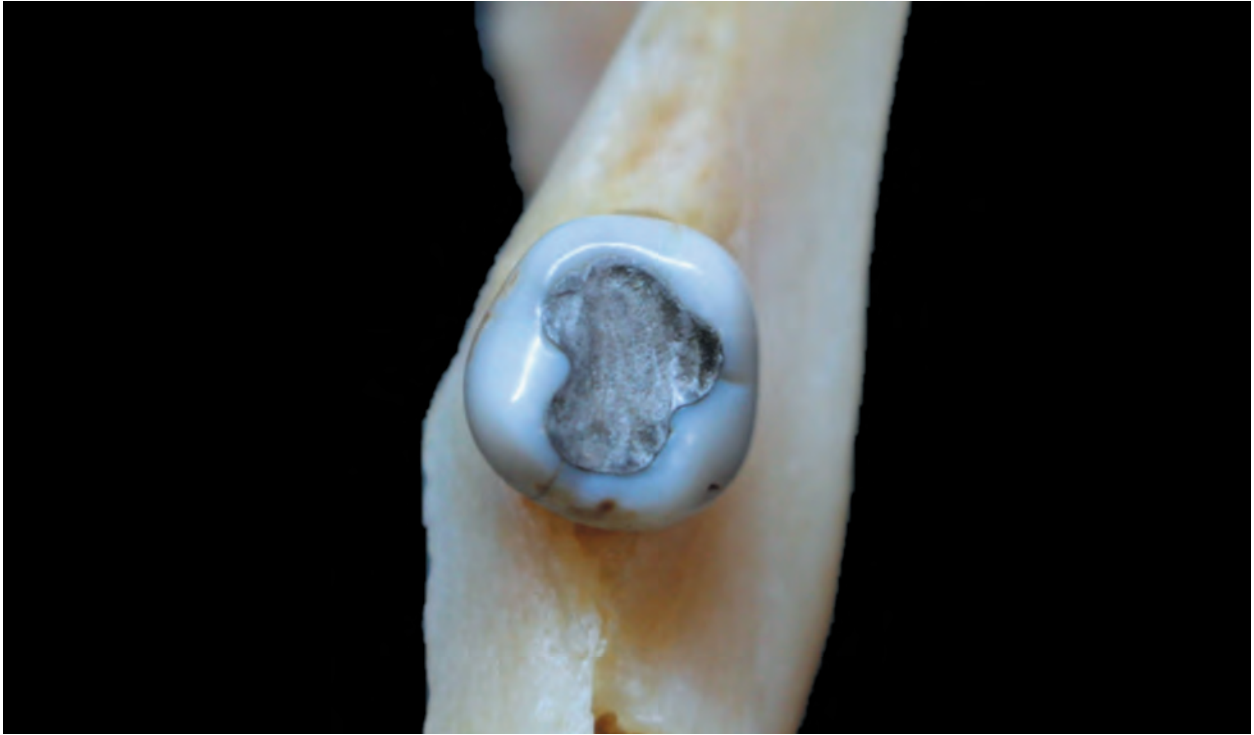


Plate 3.5.1.

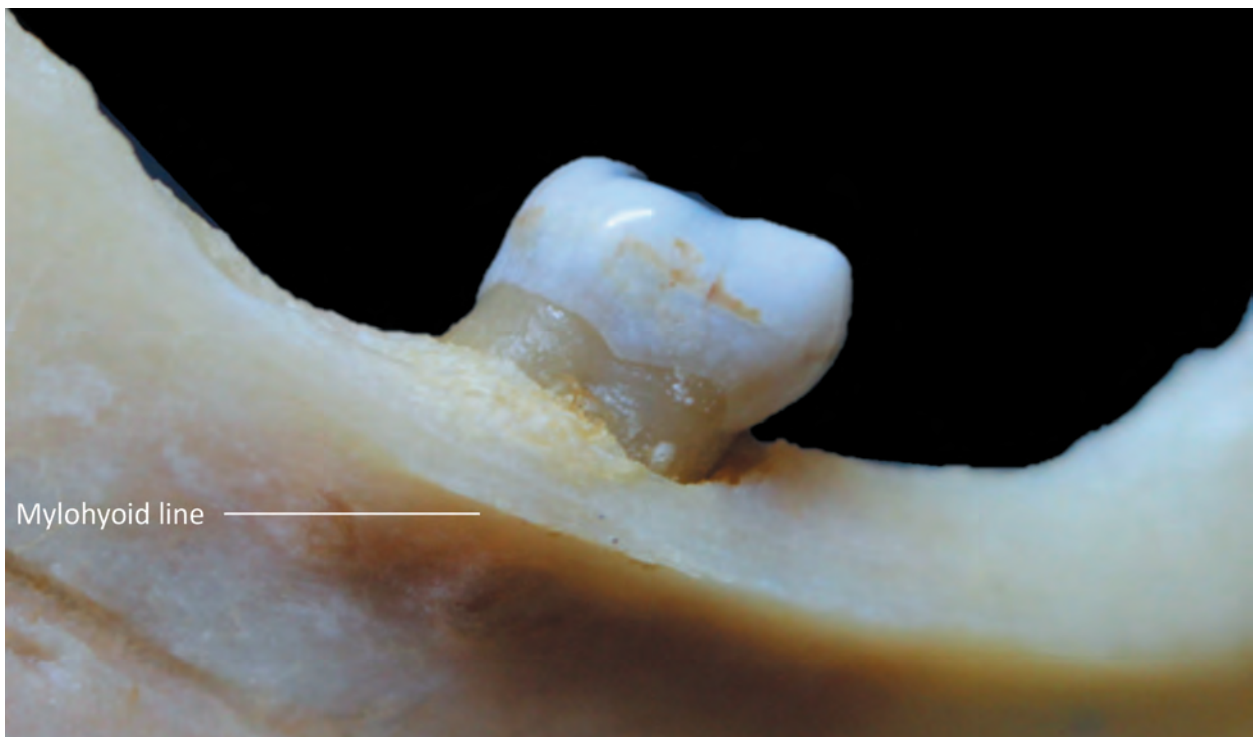


Plate 3.5.2.



Plate 3.5.5.



Plate 3.5.6.



Plate 3.6.13.

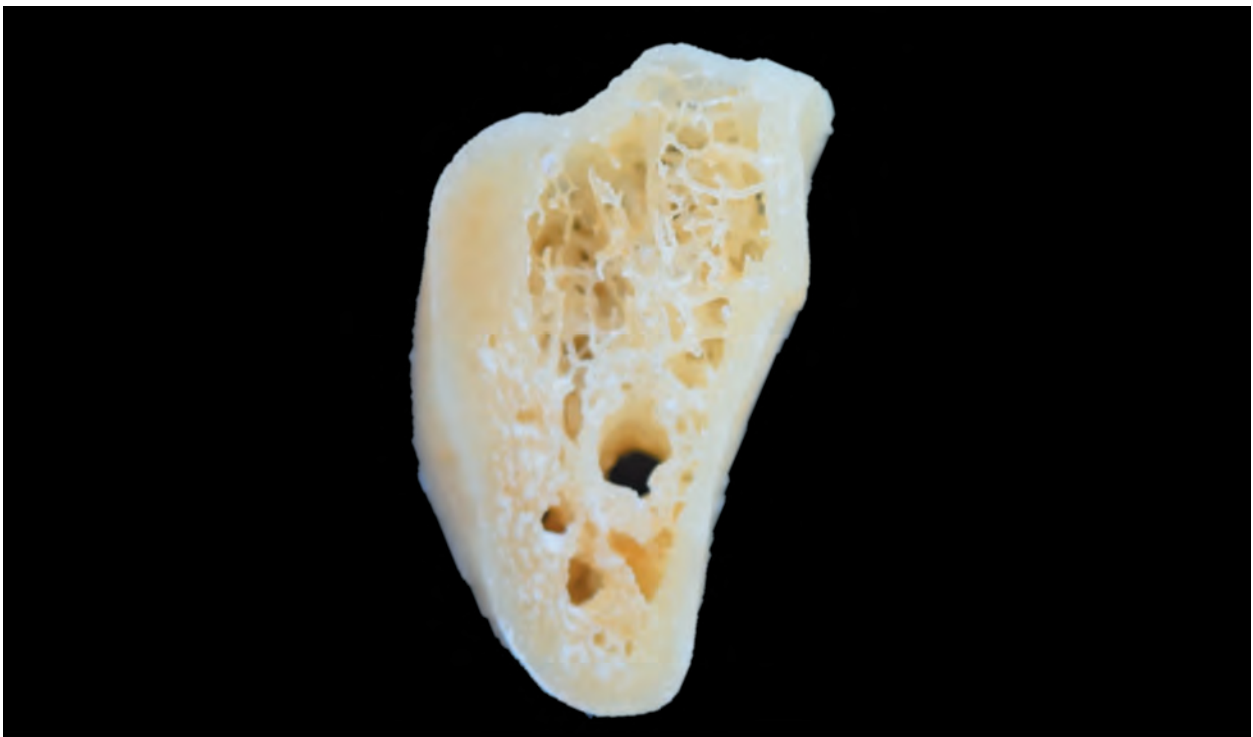


Plate 3.6.14.

4.1: MANDIBULAR FORAMEN

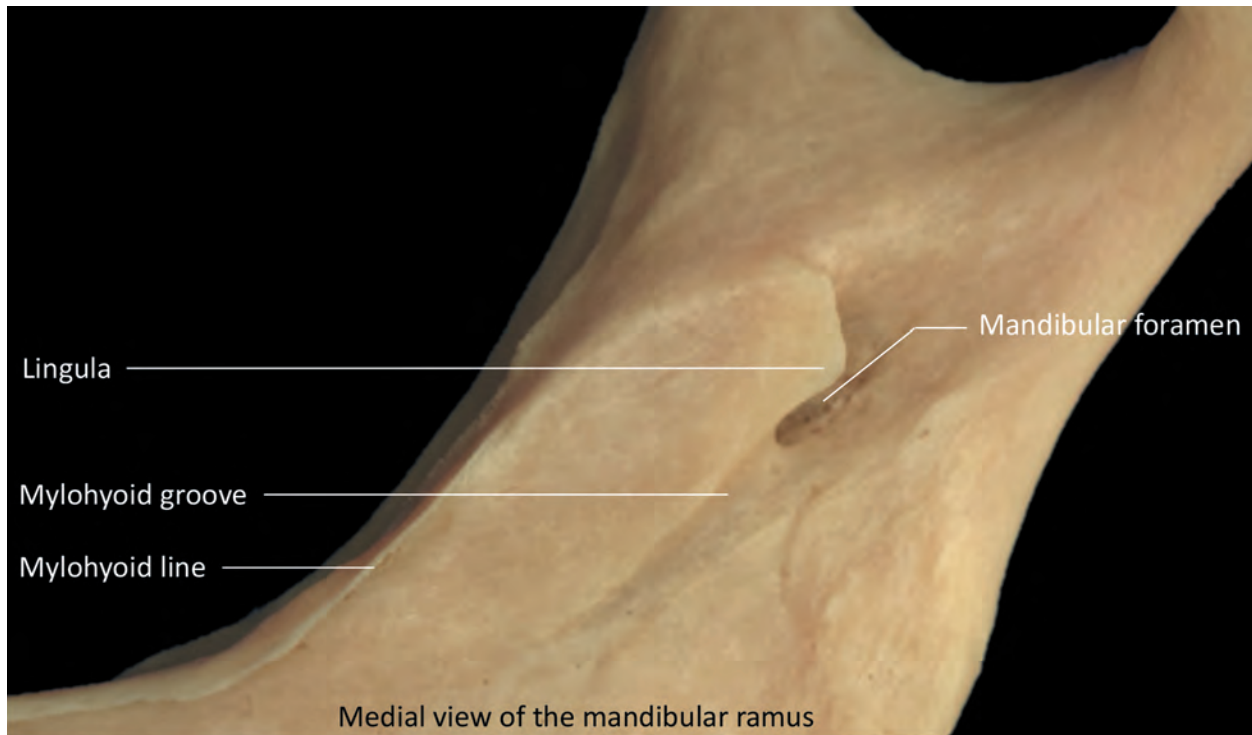


Plate 4.1.1.

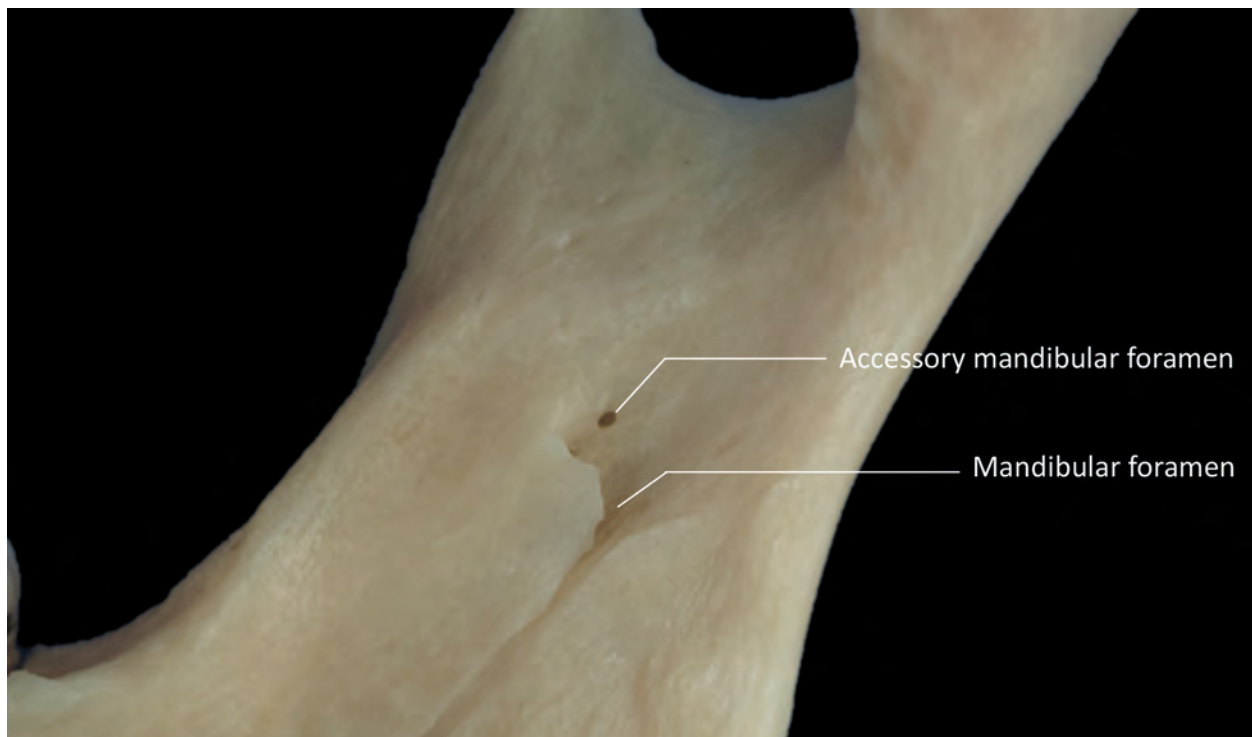


Plate 4.1.2.

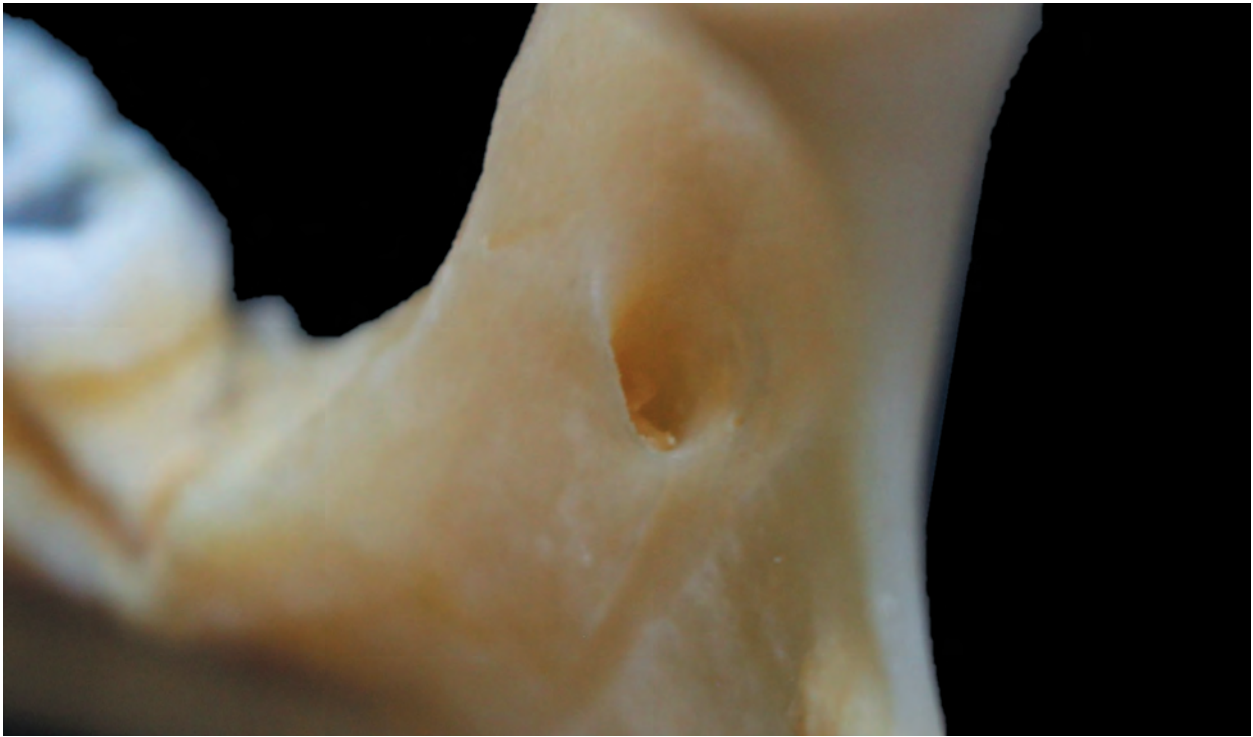


Plate 4.1.57.

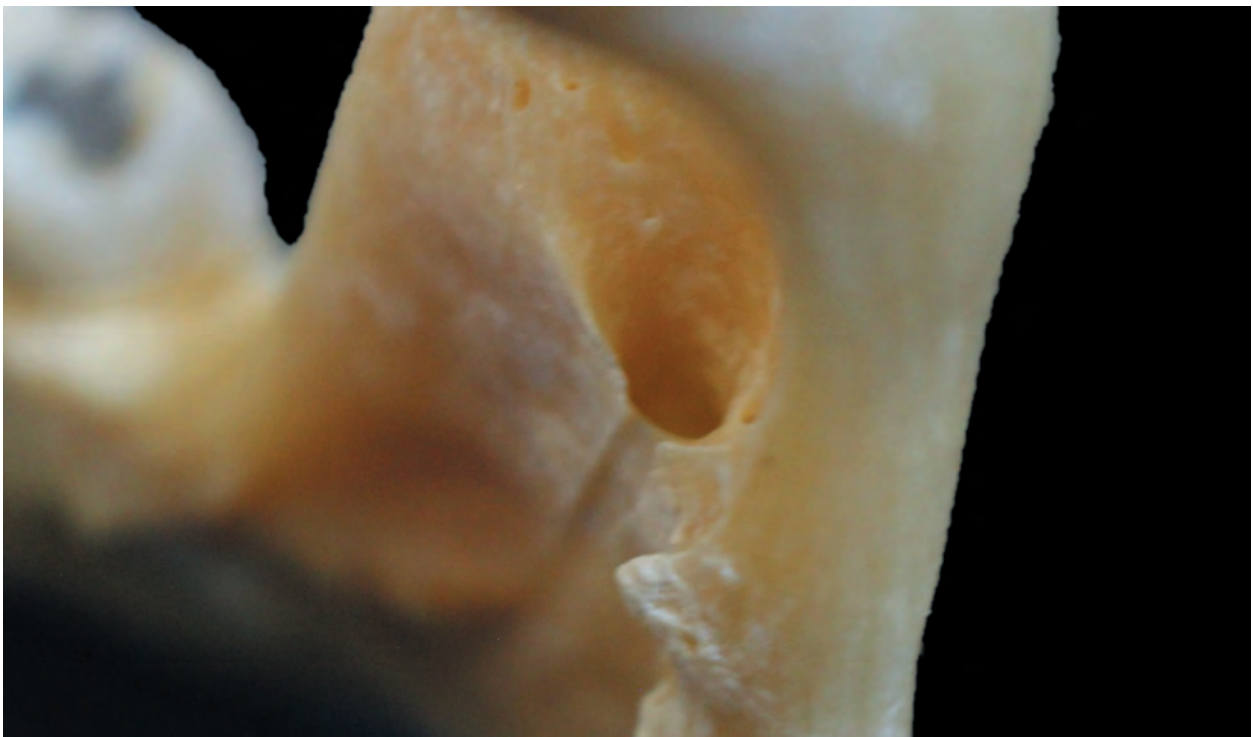


Plate 4.1.58.

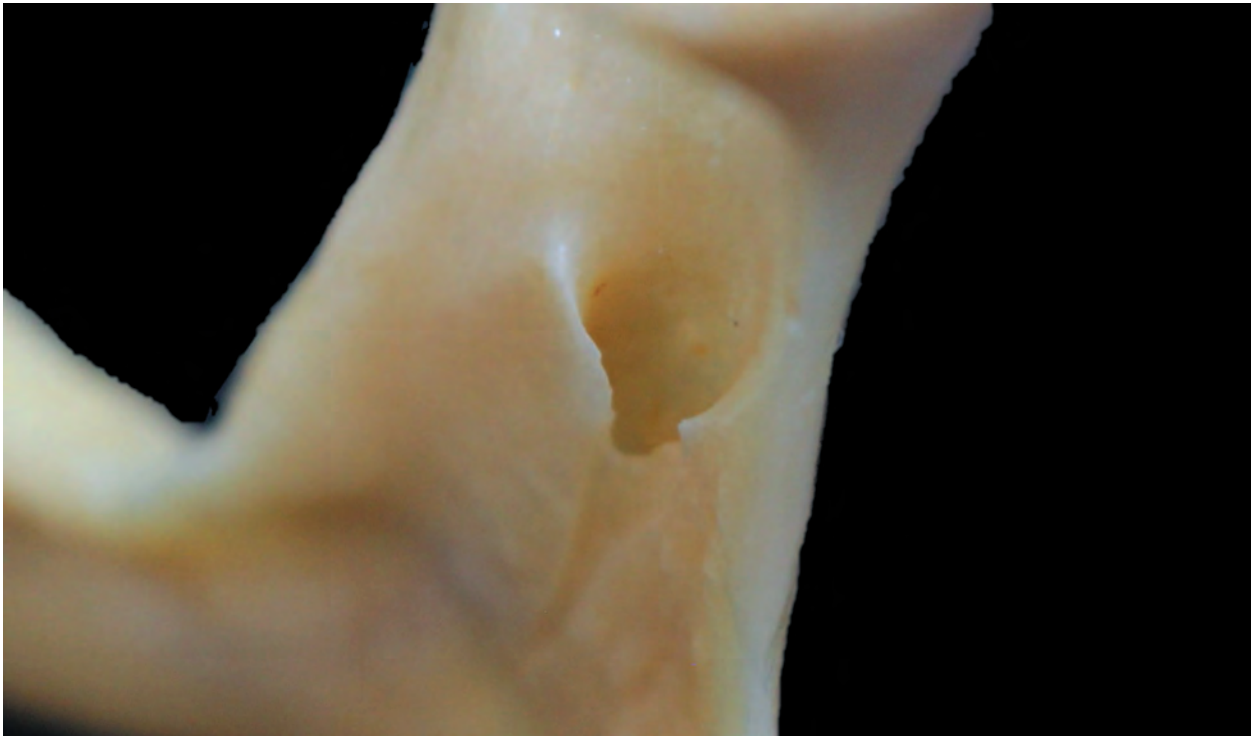


Plate 4.1.59.



Plate 4.1.60.

5.1: 27-WEEK

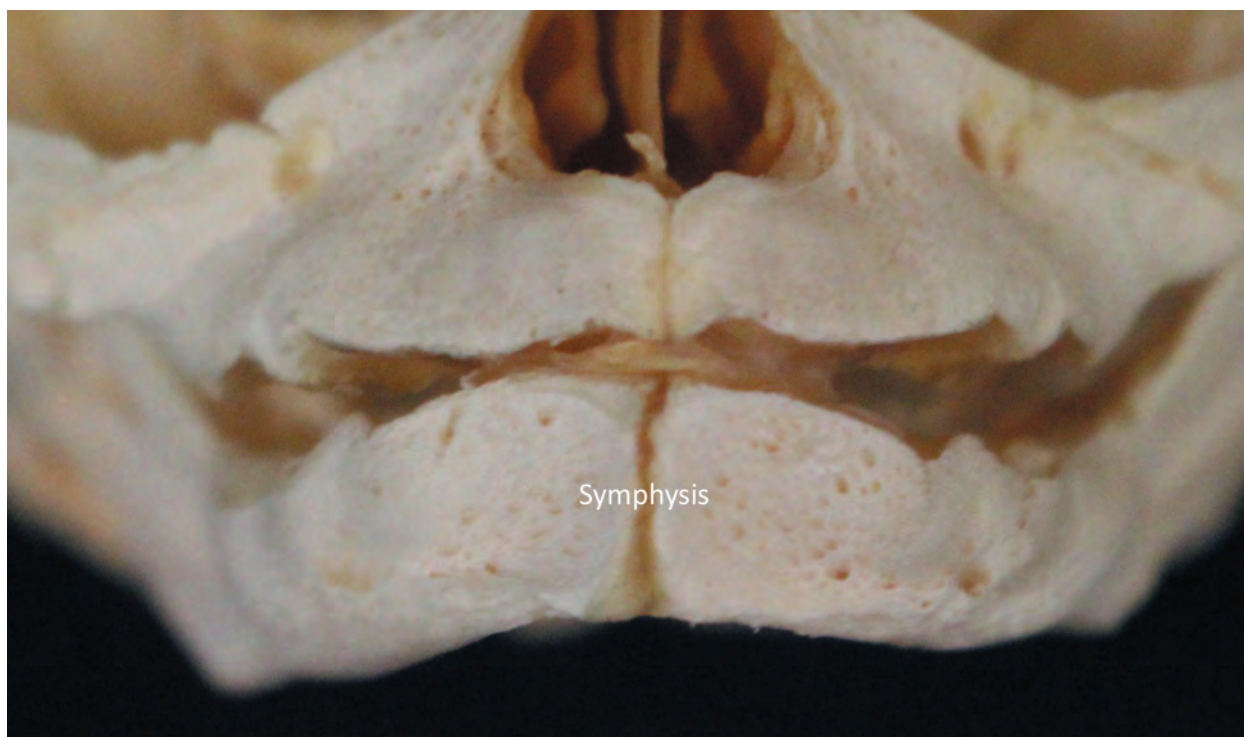


Plate 5.1.1.

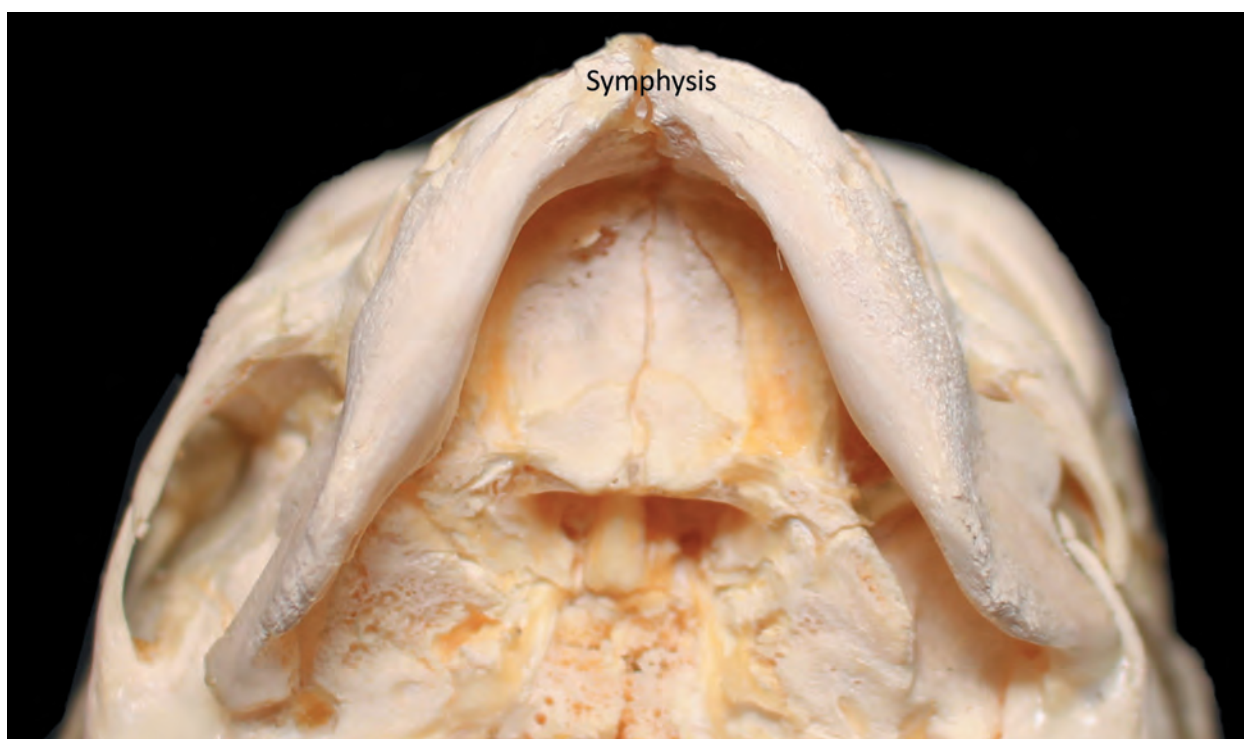


Plate 5.1.2.

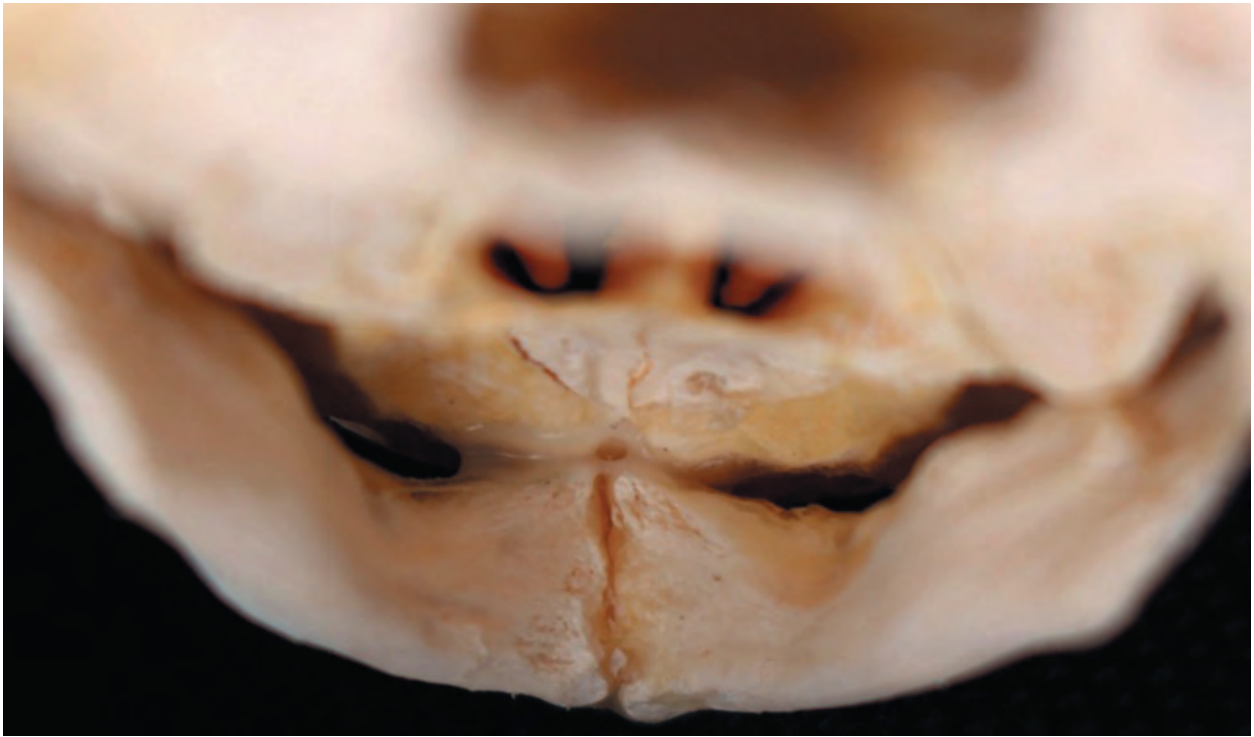


Plate 5.1.7.

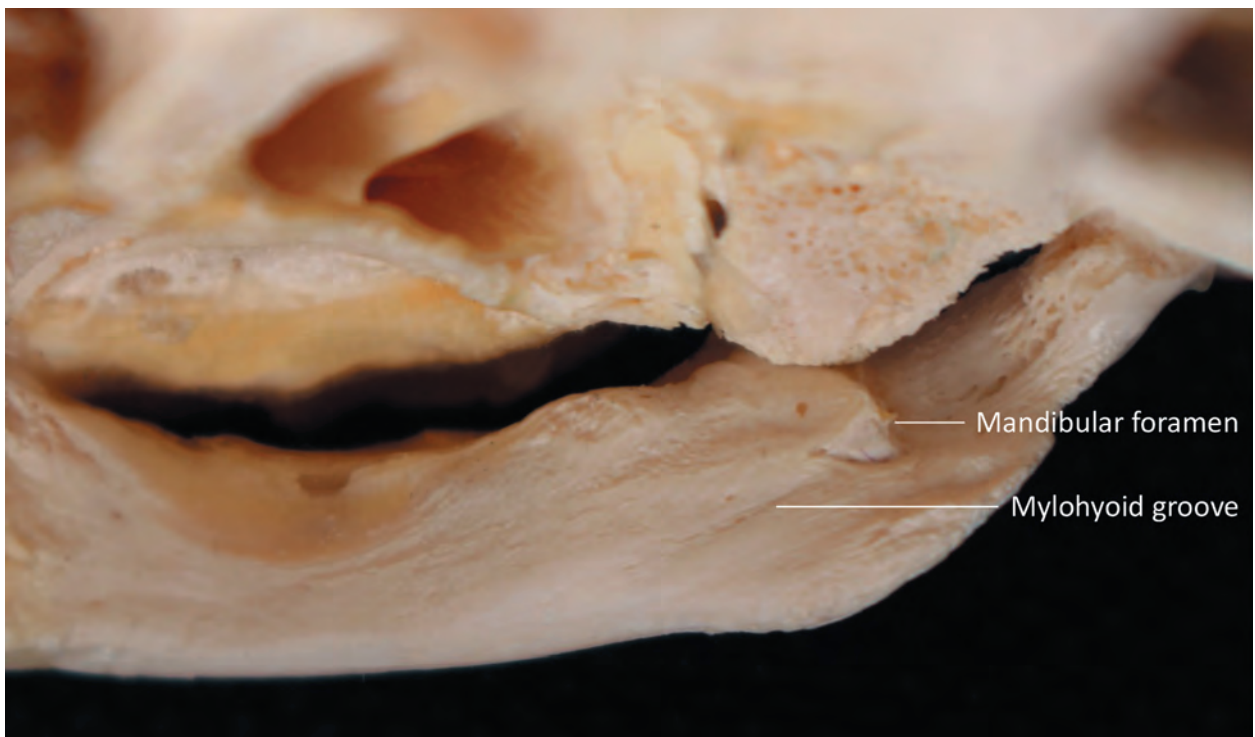


Plate 5.1.8.

6.2: ANTERIOR MANDIBLE IN CBCT

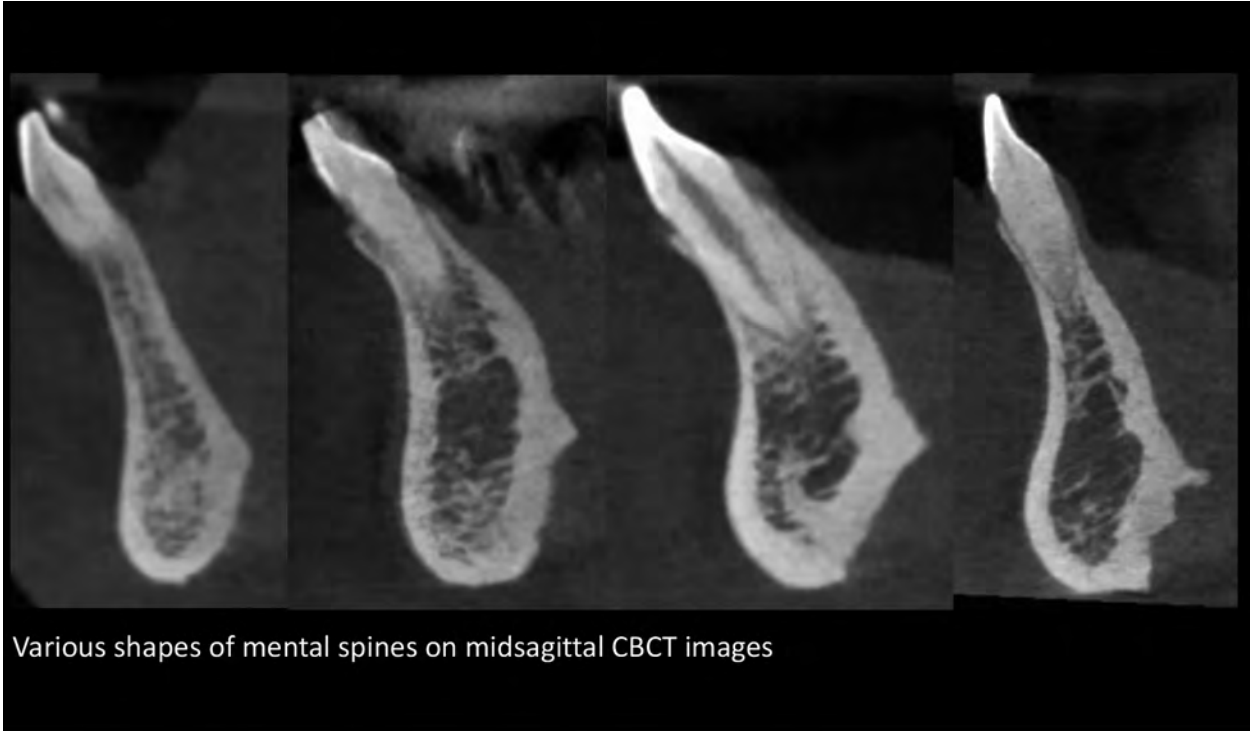


Plate 6.2.1.

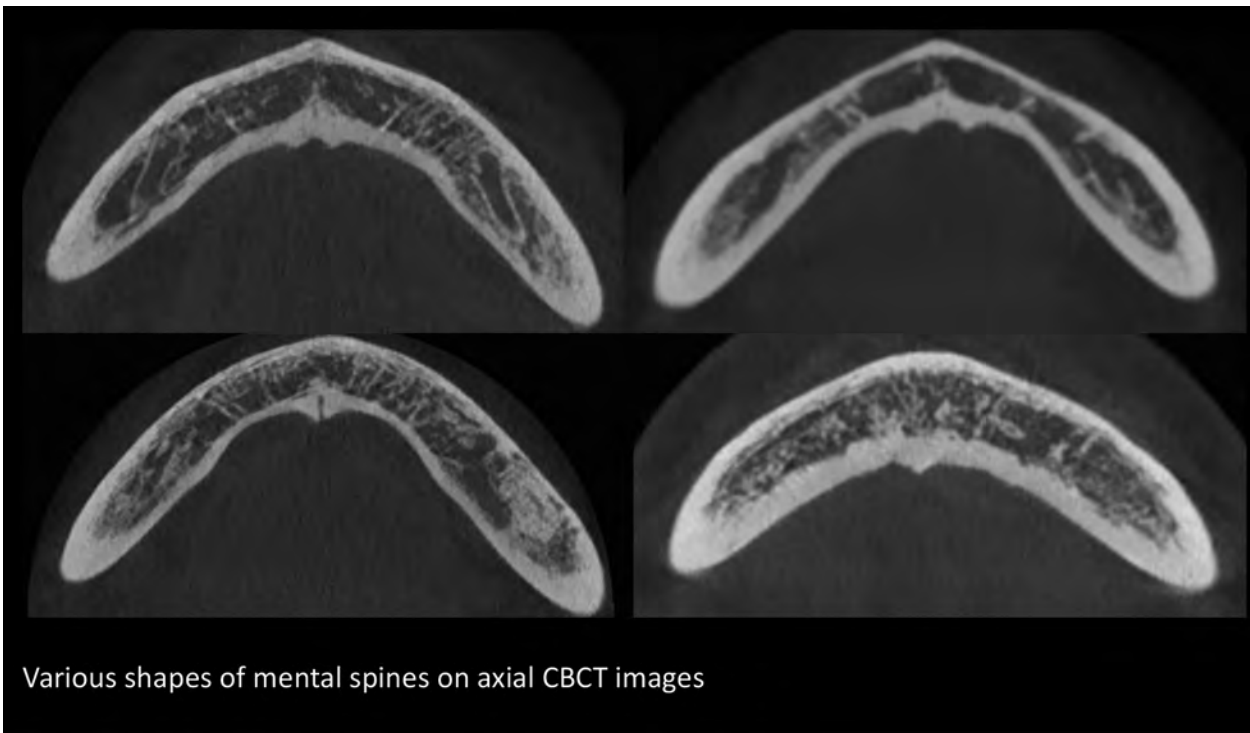


Plate 6.2.2.

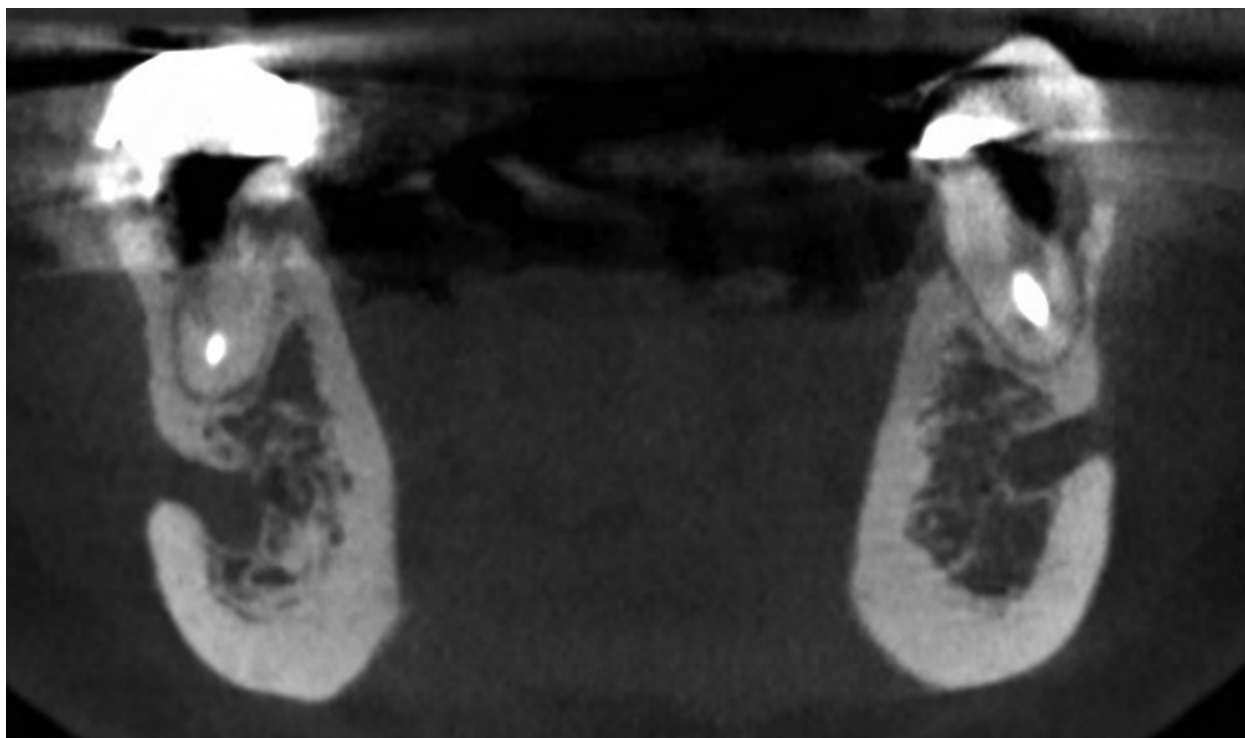


Plate 6.3.5.

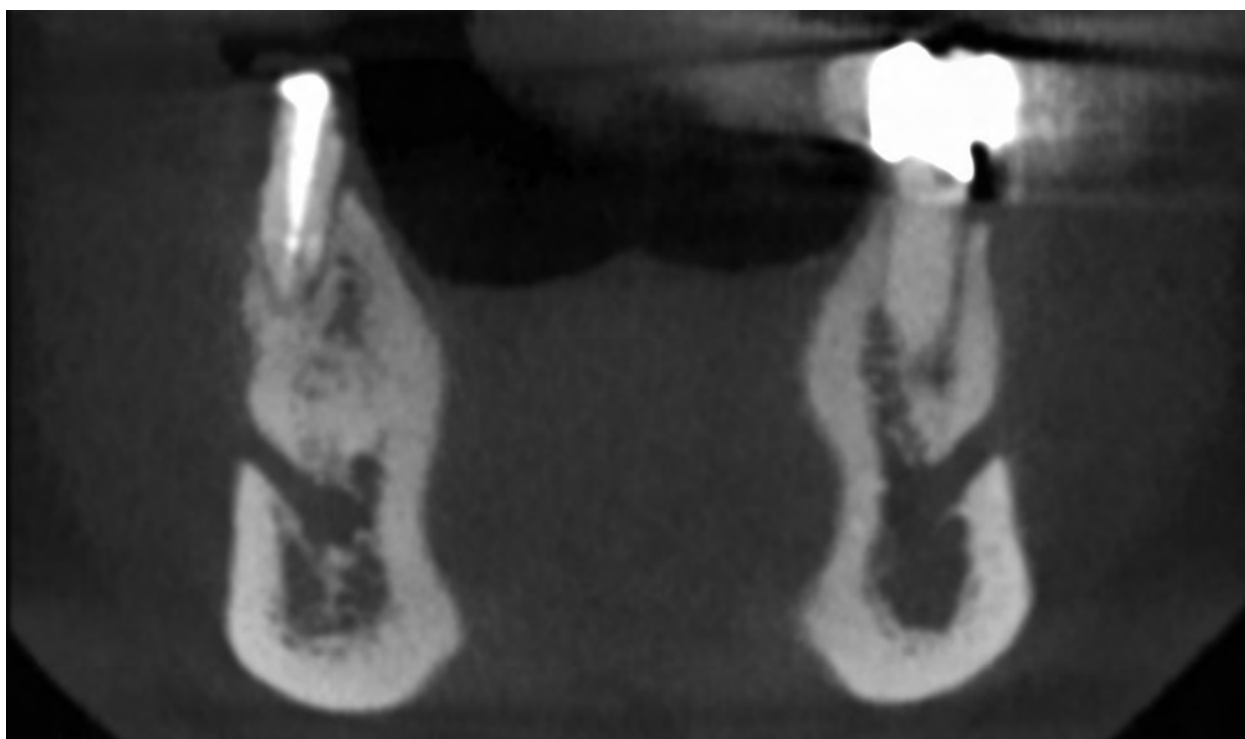


Plate 6.3.6.

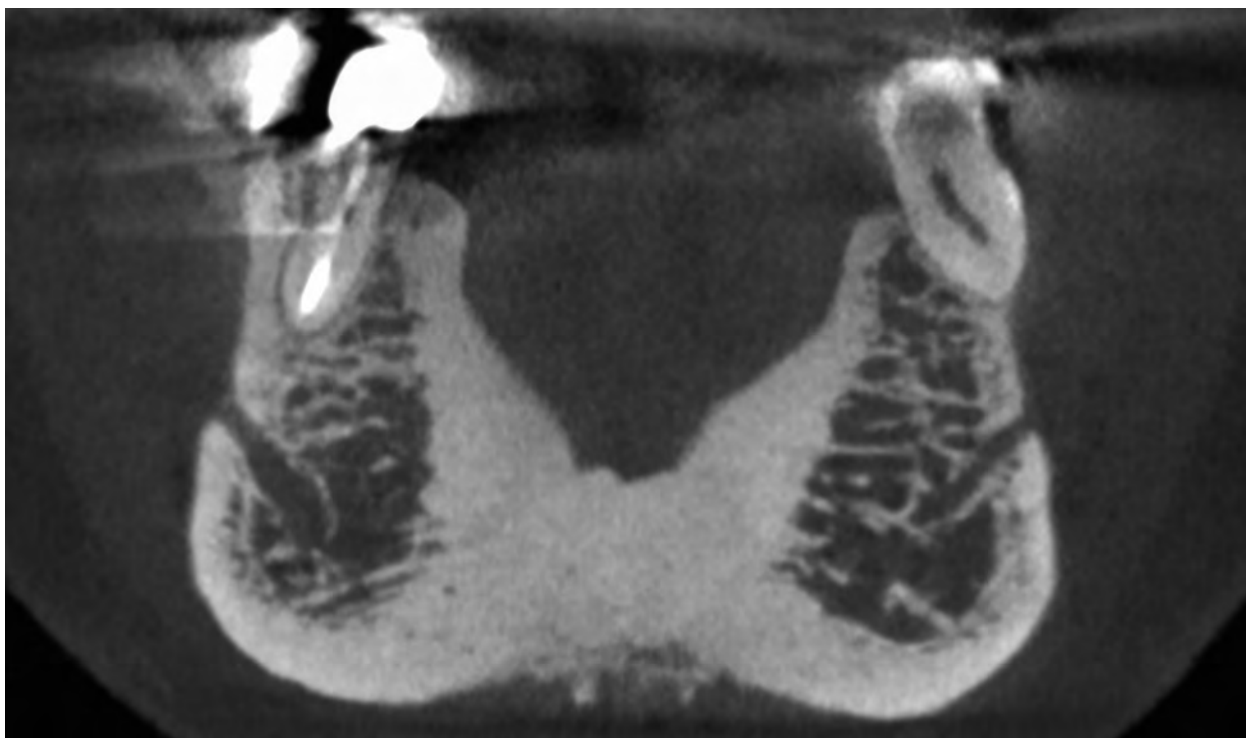


Plate 6.3.7.

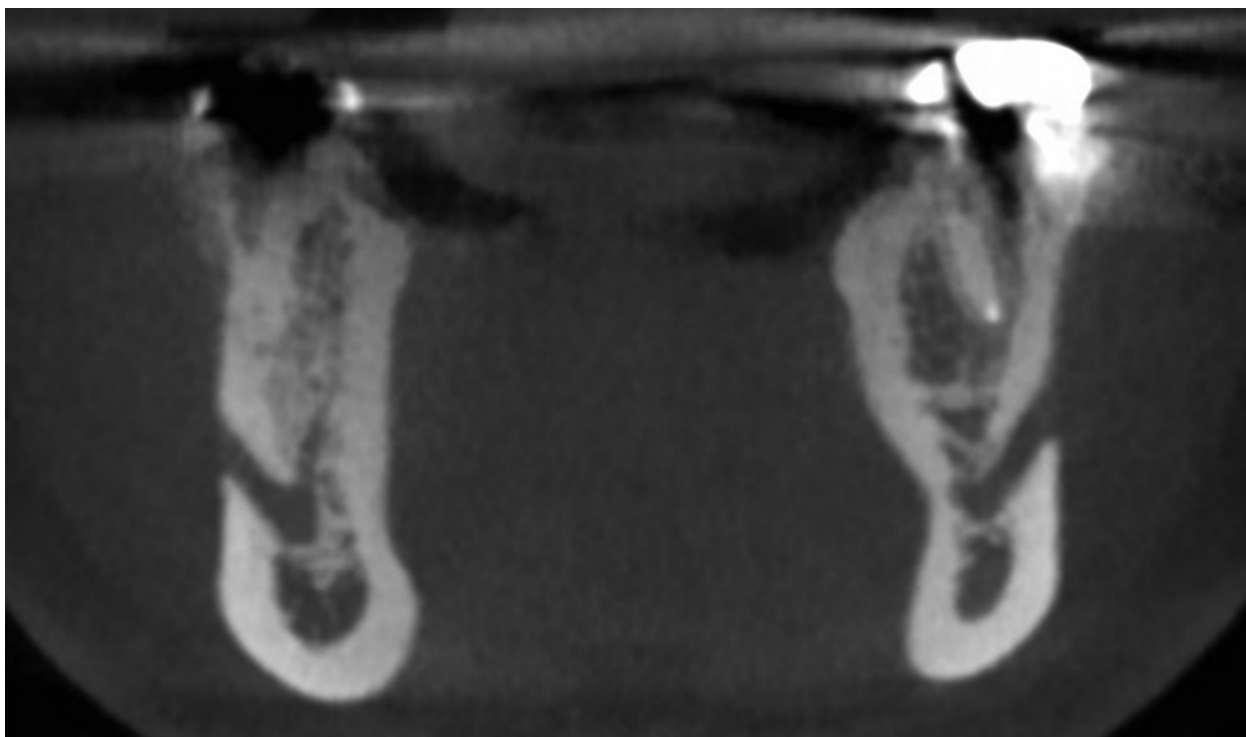


Plate 6.3.8.

7.3: CANINE

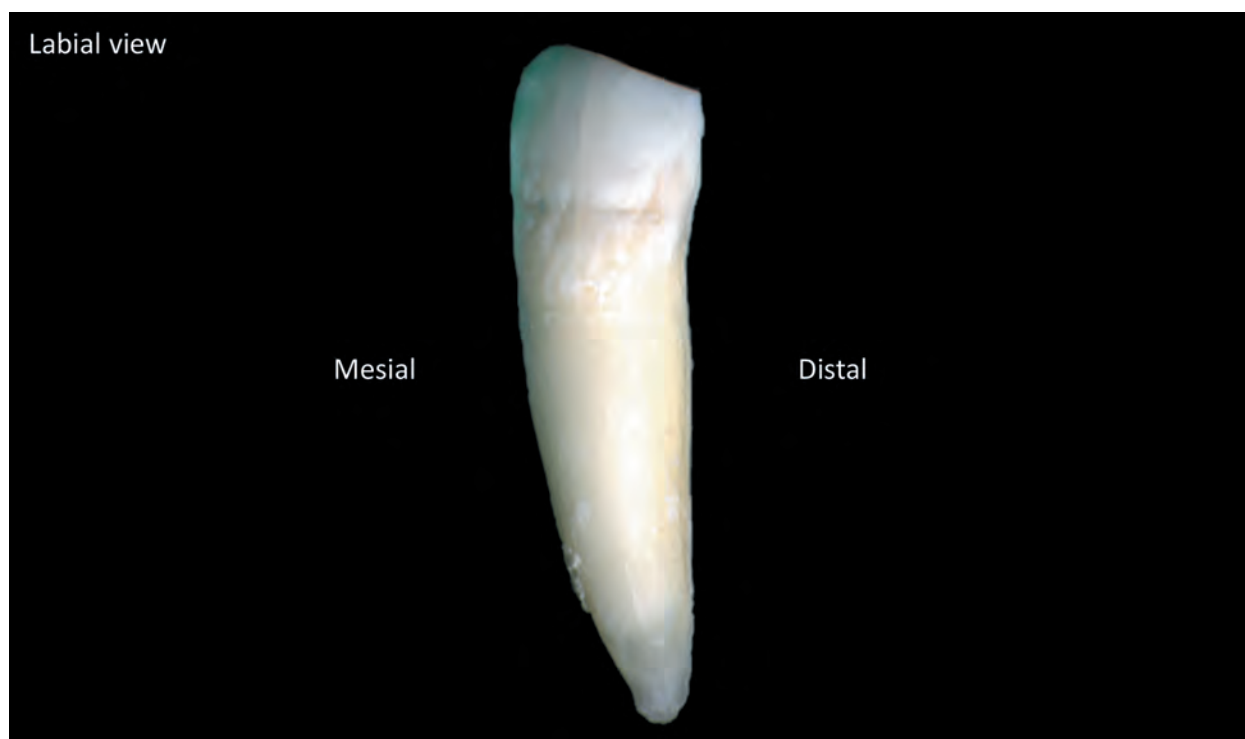


Plate 7.3.1.

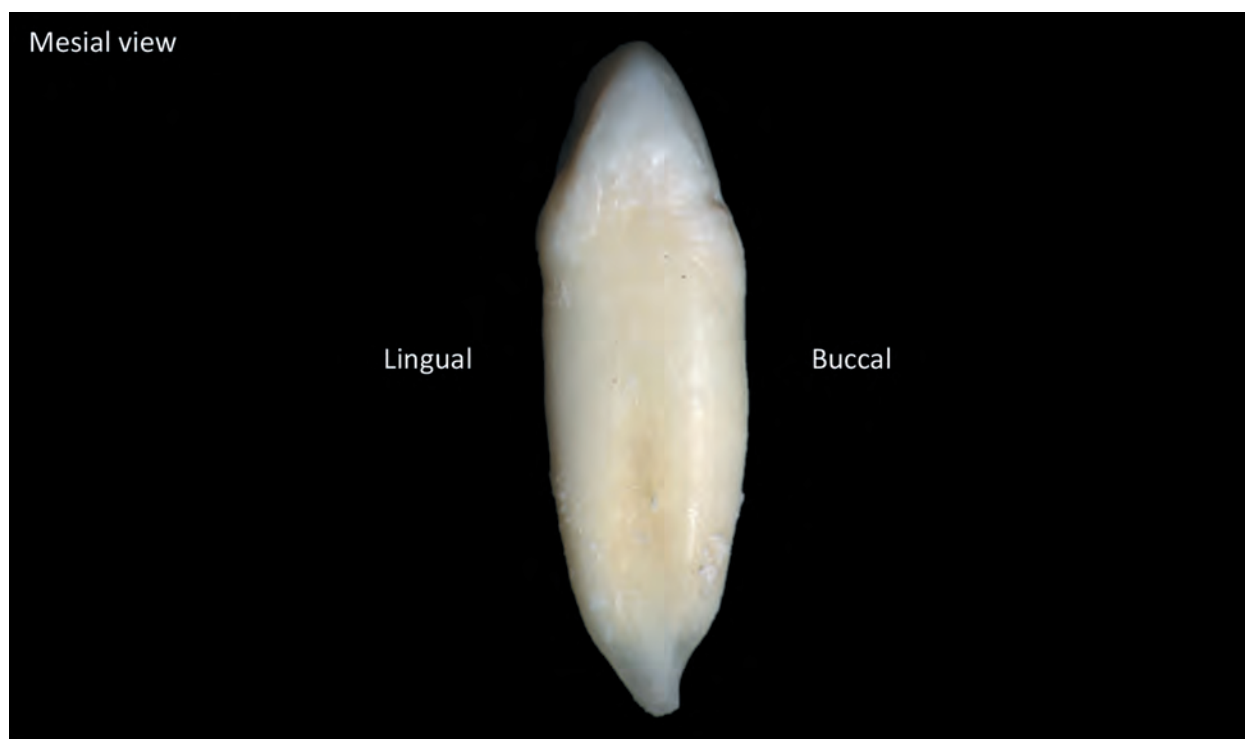


Plate 7.3.2.

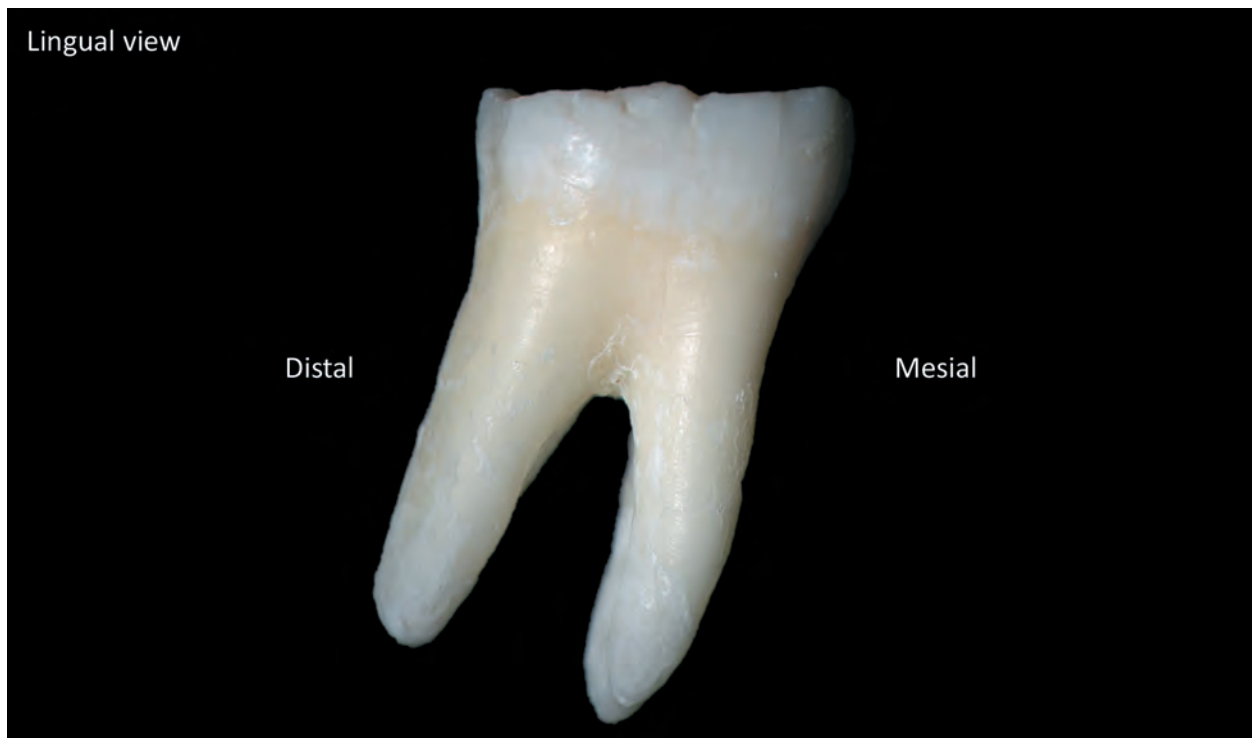


Plate 7.6.3.

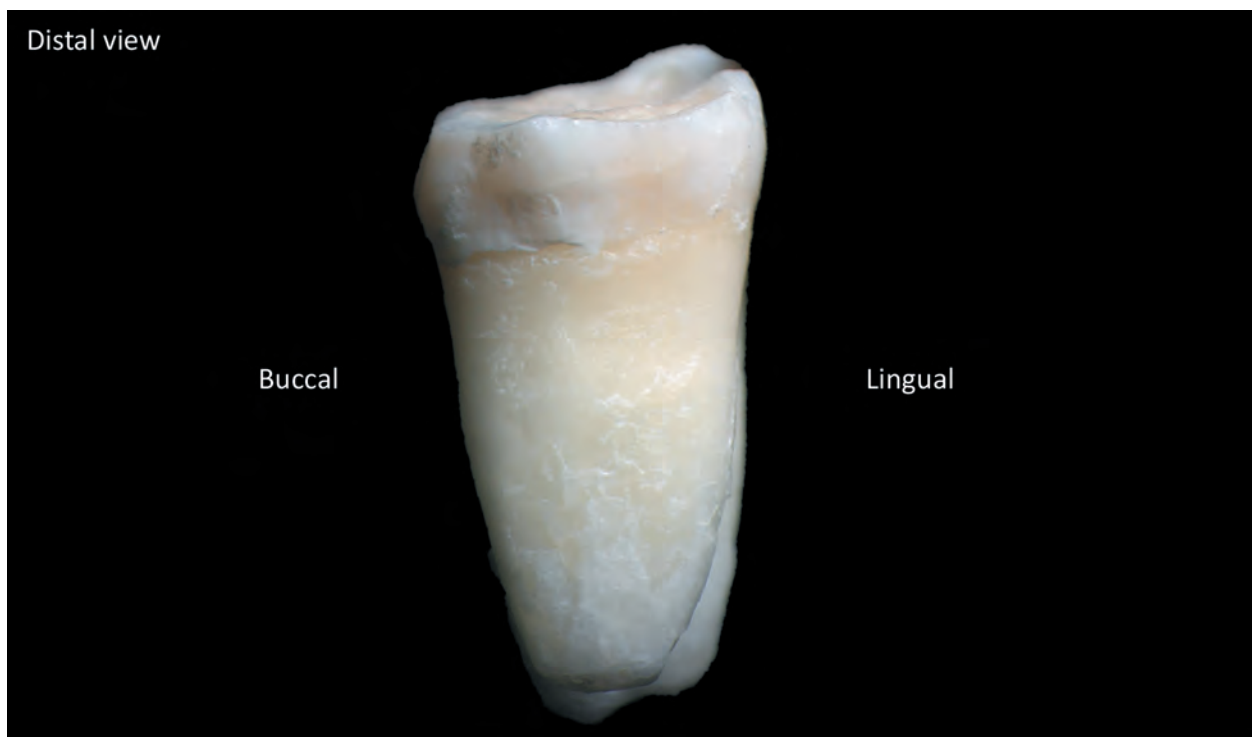


Plate 7.6.4.



Plate 7.8.5.